

CHOIR ROBES

The development of choir robing runs parallel to the history of clergy wear; the cassock and surplice previously described being obvious examples. Such differences as there are in the details of the various robes have arisen mainly through use, but the most significant development in recent times has been the popularity of coloured robes and gowns, particularly suitable for lady choristers. No less knowledge and experience is required to tailor garments for the choir than for the clergy. Properly measured and made by our experts, the cassock and surplices illustrated will, with care, last very many years.

Double and single breasted styles of cassocks are illustrated and both are made to a choice of black and coloured, traditional and modern materials.

- 730 Choir Cassock The cassock illustrated is double breasted in style with shoulder and waist buttoning and is available in all standard sizes to suit choristers of all ages. Usually supplied with step collar opening but collar 'all around' is available at no extra cost. Cassock bands also available.
- 729 Choir Cassock Single breasted style with widely spaced front buttoning. A closed collar held with a hook and eye is available as a 'no cost' alternative to usual step opening.
- 118 Choir Cassock (Not illustrated). Unlined single breasted cassock available in polyester materials only. Ideal for summer wear or hot climates.
- 119 Choir Cassock (Not illustrated). Unlined, double breasted style available in polyester materials only.

CHORISTERS' SURPLICES

- 532 The traditional and popular medium gathered surplice. Gathers into a rounded yoke and is normally worn knee length.
- 589 Cathedral Style Choir Surplice. This fully gathered style follows the Old English pattern having long pointed sleeves and is worn mid-calf length.

CHOIR AND SERVERS' COTTA

- 575 Features shorter sleeves and a square-shaped yoke into which the generous fullness of the garment is gathered. If required, lace can be added to hem and sleeves, style 575A.



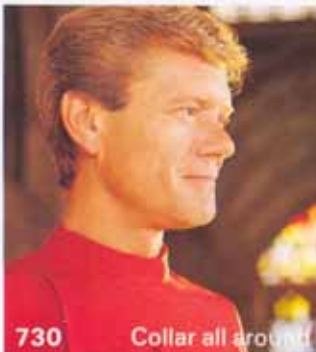
575



532



730



730

Collar all around

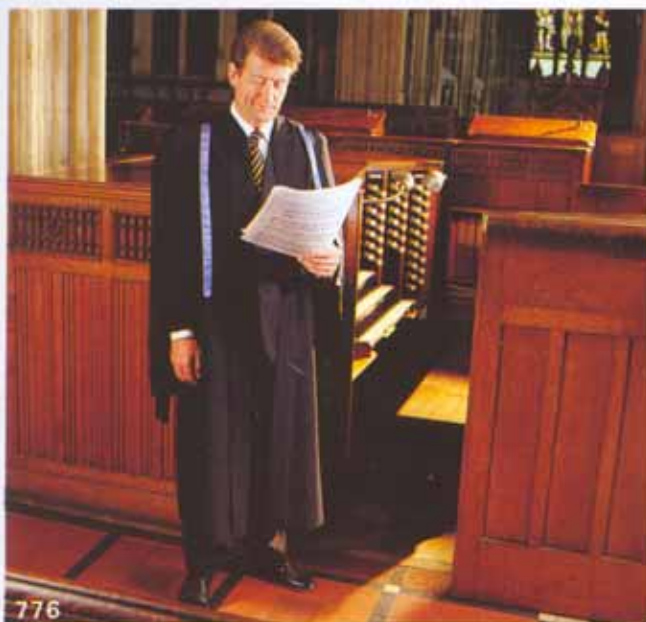


729

Closed collar



729



ORGANIST'S ROBES

For the cassock we recommend the double breasted style 730, with its fuller skirt for ease of movement at the organ.

- 776 Organist/Choirmaster's Gown. This robe is extremely popular by those who do not wish to wear a cassock and surplice. The gown is open fronted and has split sleeves for easy access whilst playing/conducting. A gathered yoke ensures a comfortable fit and the sleeves are trimmed with blue taffeta silk.
- 532A As Choristers' Surplice style 532 but with special semi-wing sleeves for freedom of movement.
- 589A Cathedral-style Organist's Surplice. To complement the Choristers' style 589 but with semi-winged sleeves for convenience whilst playing.

SERVERS' OR CRUCIFERS' ROBES

- 554 Rochet. A graceful flowing garment with semi-winged sleeves usually worn 8" to 10" off the floor. Ideal for Crucifer or Choir use.
- 388 Choir/Servers' Alb. This popular robe is available in white for Servers' use or in colours for choir wear. The robe is equally suited to wear by male or female. The small attached cowl can be self coloured or contrasting and can be made detachable for a small extra cost. Separate cowls are also available.
- 389 Choir/Servers' Tunic. This robe again is ideally suited for wear in white by servers or in colours by choir. The double breasted style features a cross-over collar and wide sleeves.
- 390 Choir Scapular. An alternative to the traditional surplice. The scapular can be worn over cassocks as well as Albs/Tunics. Plain or with motif as illustrated.
- 391 Servers' Alb. Traditional medium gathered Alb worn over a single breasted cassock. Worn cassock length.

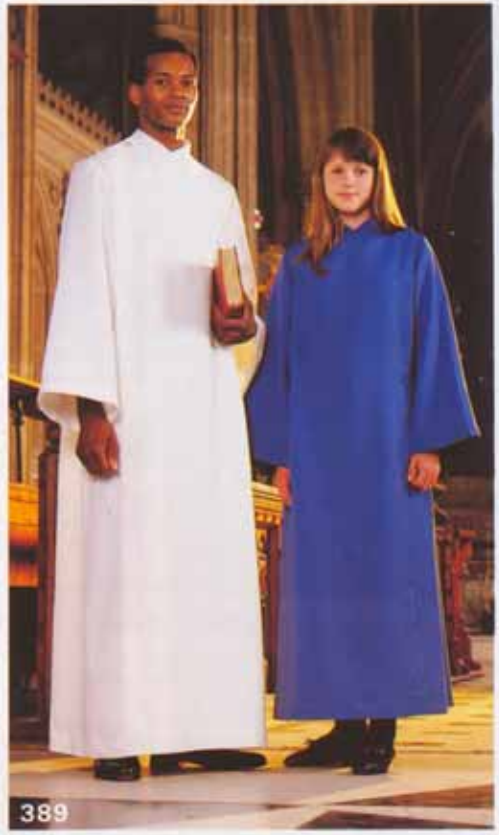
LADIES' CHOIR GOWNS

- 540 An Academic-style robe which is open fronted and features wrist length open sleeves. A choice of either a pleated yoke or gathered is available.
- 693 This gown is generously cut with the fullness pleated into a yoke. The robe comes complete with a white Collar and Jabot (style 822) and the sleeves feature small tabs of a contrasting colour. The facings are held together with hooks and eyes. As with other gowns shown, a Juliet Cap can be worn or if preferred, a Tam or Oxford style Cap.
- 680 This gown has been designed to meet the need to combine simplicity with a graceful drape. Generously wide sleeves, supplied complete with white collar, style 825.
- 676 A modern style having a contrasting zipper front facing and matching collar trim. Shown wearing a Juliet Cap.
- 678 A Gown of modern style featuring a contrasting attached collar. Opening at the back by means of a concealed zipper.

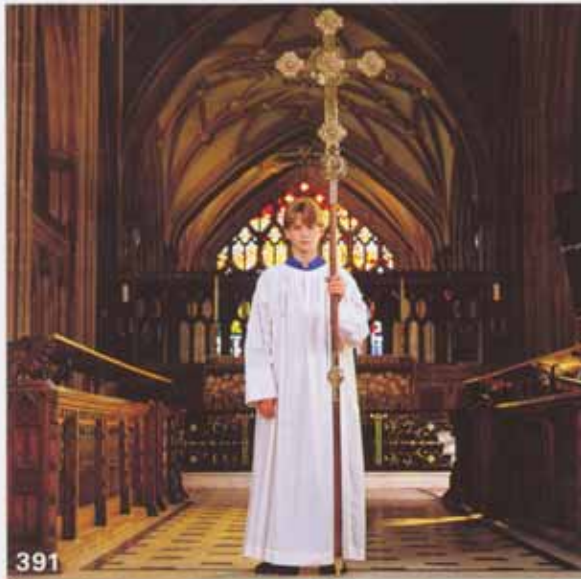




388



389



391



390



540



693



680



676



678

LADIES' COLLARS

The two collars illustrated have been designed specially for wear with gown styles as follows:

Style 822 with Gown 693.

Style 825 with Gown 680.

Sizes of collars are based on the bust size of the gown.

Girdles—available in white cotton in 15', 13½' and 10½' lengths.

Wool Girdles—13½' length available in black, scarlet, crimson, blue-purple, medium blue and Mary blue.

CAPS

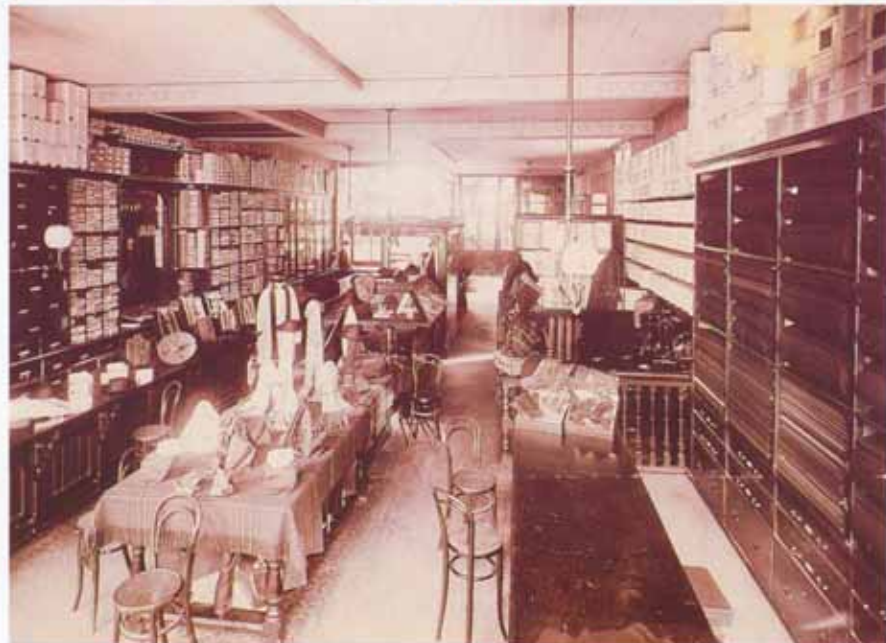
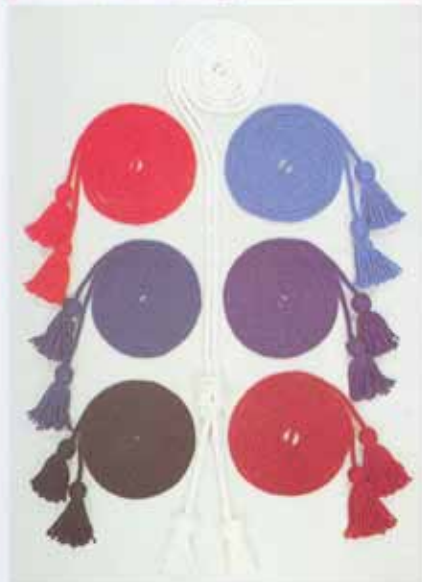
- 938 Juliet Cap Ideal for junior members of choir.
- 939 Oxford Cap Suitable for wear with all gown styles.
- 940 Tam Cap Available with or without black tassel. An attractive alternative for ladies' wear.
- 817 Isca Collarettes A ruff which features permanent sewn-in pleats and has a button fastening. Available in a fully washable polyester and cotton. Stock sizes 10½" to 15".
- 818 Exeter Collarettes This ruff is gathered into the neck-band. Available in the same material and sizes as the Isca style.



We are the official Robemakers to

The Royal School of Church Music

Enquiries are welcome at any of our addresses from choirs affiliated to the RSCM and students attending affiliated Theological Colleges.



In this photograph, taken in 1907, can be seen the extensive stock of boxed goods, such as surplices, cottas, albs, vest and collar stocks, as well as suitings, hats and outdoor wear available to customers at the Exeter shop.