



WIPPELL'S

FABRICS & TRIMMINGS



FABRIC

The materials we use are woven to our own specifications to ensure that they are stable in use, durable and of a consistently high quality and finish. Illustrated is our range of popular traditional damasks, brocades, brocatelles and tapestries, available from stock or on quick delivery.

For convenience and easy identification we have arranged our fabrics into four main groups and you may find it helpful to refer to the following broad descriptions before making your selection and before requesting samples. All four fabric groups carry materials in the four main liturgical colours and Group D includes tapestries suited for use throughout the church:

- Group A A selection of plain and patterned materials, medium weight, woven in rayon and rayon/cotton mixtures suitable for vestments and small hangings.
- Group B Traditional damasks of cotton/rayon mixtures, medium weight, suitable for vestments. Particularly recommended for any item to be embellished with fine quality hand embroidery.
- Group C Includes damasks and brocades of rayon/silk, cotton/silk, and silk/cotton mixtures suitable for vestments and all hangings.
- Group D Brocatelles and tapestries and the best quality 100% silk brocade included in this grouping. The tapestries are of cotton/rayon and cotton/rayon/lurex mixture.

FRINGES, ORPHREYS, BRAIDS AND TRIMMINGS

Fine quality trimmings are essential to the finished effect of vestments and hangings and the illustrated examples are usually available from stock or on prompt delivery.

Fringes are woven in rayon in 2" and 3" sizes and special colours and combinations are available at extra costs.

Woven orphrey bandings in the styles, colours and widths shown prove effective as a way of trimming vestments and smaller hangings and orphrey bandings made up from our wide range of plain and patterned materials and velvets, outlined with any of the illustrated braids, are readily available as alternatives or for the embellishment of larger hangings.

Trimming braids in general are supplied ½" and 1" wide with some styles ¾" wide.

Tassels can be supplied in complementary colours for vestments and hangings.

VESTMENTS AND HANGINGS

The materials and trimmings featured in this brochure can also be made into any of the vestments etc from our main catalogue.

J. Wippell & Co. Ltd., P.O. Box 1, 88 Buller Road, Exeter, EX4 1DQ England

Tel: 01392 254234 Fax: 01392 250868

E-mail: wippell@btinternet.com Internet: www.wippell.com

London Office:
11 Tufton Street
Westminster
London SW1P 3QB
Tel: 020 7222 4528/9
Fax: 020 7976 7536

Manchester Office:
Northern Assurance Buildings
9-12 Princess Street, Albert Square
Manchester M2 4DN
Tel: 0161 834 7967
Fax: 0161 835 1652

U.S.A. Office:
1 Mill Street, P.O. Box 468
Branchville, New Jersey 07826
Tel: 973 948 2144
Fax: 973 948 3766
Toll Free Customer Service
(1 877) 947 7355
Toll Free Fax (1 800) 525 3749
(N. America Only)
E-mail: sales@wippell.com

GROUP 'A' FABRICS

CLOISTER BROCADE

Group A

Width – 145cm (57")

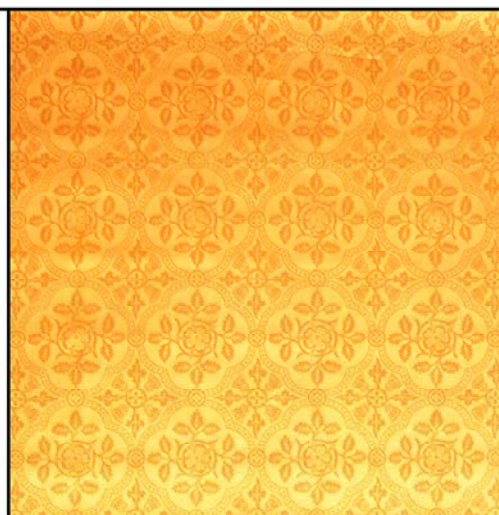
Pattern Repeat – 17cm (6½")

67% Viscose, 33% Cotton

COLOURS AVAILABLE



White Red Green Violet Roman Purple Gold.



A reversible symbolic pattern circa 1900. The combination of the English Rose and Scottish Thistle was particularly popular at that time

ELY BROCADE

Group A

Width – 122cm (48")

Pattern Repeat – 16cm (6¼")

52% Acetate, 48% Cotton

COLOURS AVAILABLE



Ivory Red Green Violet



A reversible symbolic design after the style of A.W. Pugin. First produced circa 1890

EVESHAM

Group A

Width - 131cm (51½")

Pattern repeat -27cm (10 ½")

63% Polyester, 27% Viscose, 10% Metallic Yarn

COLOURS AVAILABLE



White/Gold Red/Gold Green/Gold Violet/Gold Black Blue/Gold Gold Gold/Gold



A small 15th/16th Century design in the Florentine style, featuring the Pine Cone and Ogee

NORWICH

Group A

Width - 131 cm (51½")

Pattern repeat - 12cm (4½")

56% Polyester, 37% Viscose, 7% Metallic Yarn

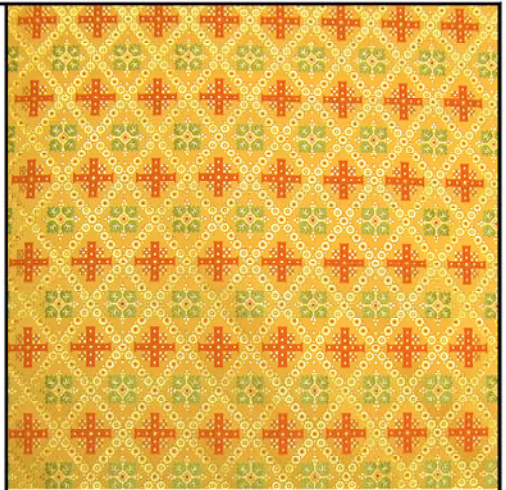
COLOURS AVAILABLE



White/Gold

Red/Green/Gold

Blue/White/Gold



A symbolic design, charming in its simplicity, designed by F.J. Flanagan in the 1950s. The 16 over reversible format lends itself to both full pattern display as well as for trimming use.

PASSION FLOWER

Group A

Width 142cm (56")

Pattern repeat 27cm (10 ½")

55% Cotton, 45% Viscose

COLOURS AVAILABLE

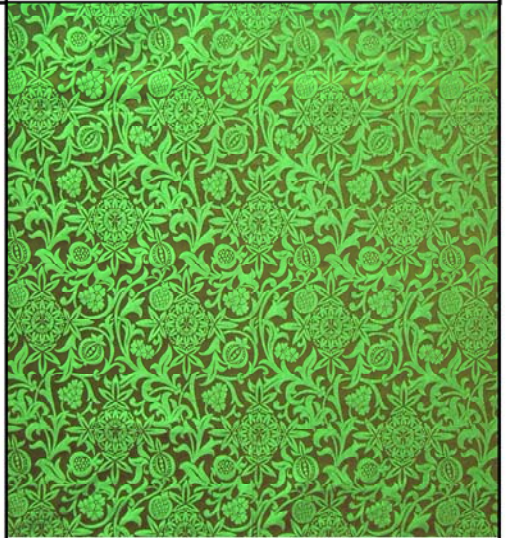


Ivory

Red

Green

Purple



A species native to sub-tropical America the Passion Flower, symbolising Christ's suffering was introduced into Christian art via Italy in the early 17th Century. This depiction is of Victoria origin

ROMSEY BROCADE

Group A

Width – 145cm (57")

Pattern Repeat – 3cm (1¼")

55% Cotton, 45% Viscose

COLOURS AVAILABLE

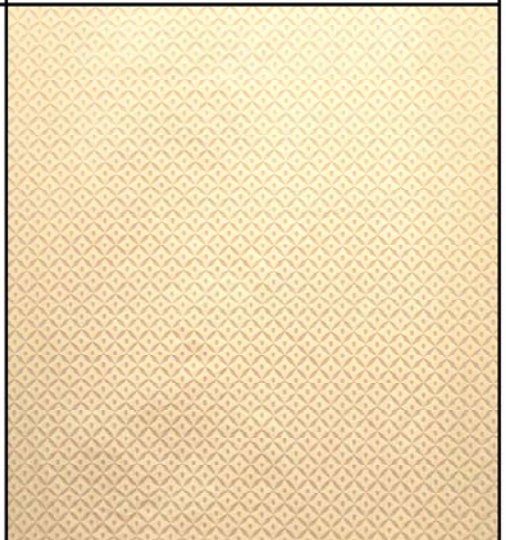


Ivory

Red

Green

Violet



This simple geometric design, originally produced in the 1930s, shows an equilateral cross formed by four diamonds, the symbol of St. Lupus of Sens.

ST. AIDAN BROCADE

Width – 145cm (57")
Pattern Repeat – 20cm (8")
67% Viscose, 33% Cotton

COLOURS AVAILABLE



White Deep Cream Red Green Violet Blue R. Purple

A Small reversible pattern featuring the English Rose; designed at the turn of the century.

ST. ELIZABETH (EXCLUSIVE TO WIPPELL'S)

Width 125cm (49")
Pattern repeat 13cm (5")
82% Polyester, 18% Metallic

COLOURS AVAILABLE



Ivory/Gold Red/Gold Green/Gold Purple/Gold

A small turnover reversible design of Northern European origin

SHERWOOD

Width – 140cm (55")
100% Cotton.

COLOURS AVAILABLE



Ivory Red Green Violet Blue Gold

A slub faced plainweave woven in 100% Cotton which makes this versatile fabric washable at 40 degrees

GROUP 'B' FABRICS

FAIRFORD BROCADE

Group B

Width – 145cm (57")

Pattern Repeat – 55cm (21½")



60% Cotton, 40% Viscose



COLOURS AVAILABLE

Bridal White Ivory Red Violet Green Black Blue
Gold Ivory/Gold Red/Gold Violet/Gold Black/Gold Black/Silver Blue/Gold



A Victorian Gothic design after the William Morris School with further inspiration drawn from a 15th century portrait of Richard III

FLORENCE BROCADE

Group B

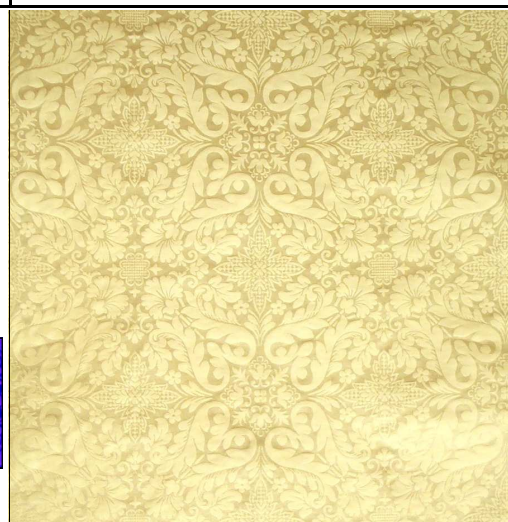
Width – 145cm. (57")

Pattern Repeat – 37cm (14½")

60% Cotton, 40% Viscose



COLOURS AVAILABLE



A late Victorian design with a heavy weft effect, designed by William Perkins and in-

GLASTONBURY BROCADE

Group B

Width – 145cm (57")

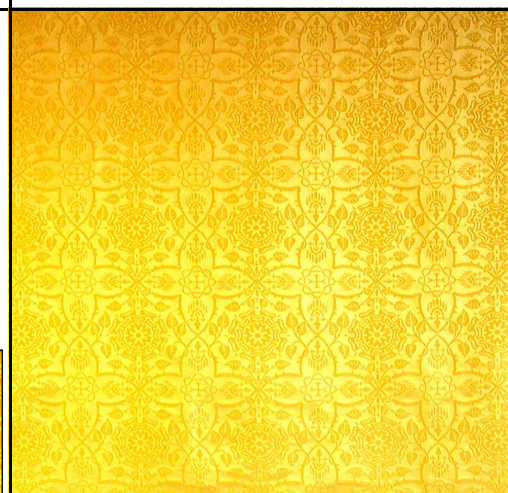
Pattern Repeat – 18cm (7")

55% Cotton, 45% Viscose.



COLOURS AVAILABLE

Ivory Red Green Violet Roman Purple Gold.



Deeply symbolic design by William Perkins, circa 1890; combining the Rose and the Crown of Thorns. The design owes its name to the ancient legend of the Glastonbury Thorn, said to have been planted by Joseph of Arimathea

LUREX ORLEANS

Group B

Width 130cm (51")

Pattern repeat 27cm (10 3/4")

41% Cotton, 21% Polyester, 21% Silk, 17% Metallic Yarn

COLOURS AVAILABLE

Gold / Red



A French design of the 16th Century evoking images of Henry VIII's meeting with Francis I of France at the field of the Cloth of Gold, the last great display of Medieval Chivalry. Also available as a traditional Cloth of gold (see Group C)

ST. MARGARET BROCADE

Group B

Width – 145cm (57")

Pattern Repeat – 49cm (19 1/4")

60% Cotton, 40% Viscose

COLOURS AVAILABLE

White

Red

Green

Black

Blue



White/Gold

Red/Gold

Green/Gold

Black/Gold

Blue/Gold



A design of the Tudor Period featuring the Rose and Crown. The Rose, an early Christian symbol, became popular in the 15th century as a result of its adoption by the adherents of the houses of York and Lancaster

VENEZIA

Group B

Width 154cm (60")

Pattern repeat 52cm (20")

61% Viscose, 32% Polyester, 7% Metallic Yarn

COLOURS AVAILABLE

White / Gold



The linear layout of this design points to its Venetian origins. 15th Century artists of this region had a taste for reproducing patterns found in the architecture of ancient Rome

WINCHESTER BROCADE

Group B

Width – 145cm (57")
Pattern Repeat – 37cm (14½")
55% Cotton, 45% Viscose.

COLOURS AVAILABLE



Ivory Red Rose Green Violet Roman Purple Gold.



An elegant Gothic design incorporating the Ogee and Rose figures. The design dates back to the early days of the company and was first woven in 1862.

GROUP 'C' FABRICS

ARAGON TAPESTRY

Width – 122cm (48") Pattern Repeat – 38cm (15")
61% Cotton, 39% Viscose

COLOURS AVAILABLE

Multi-colour on cream ground



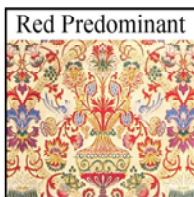
Group C

LUREX ARAGON TAPESTRY

Width – 122cm (48") Pattern Repeat – 38cm (15")
61% Cotton, 31% Viscose, 8% Met. Yarn

COLOURS AVAILABLE

Multi-colour on cream ground



A multi-coloured Indo-Portuguese design of the 18th century utilising early Christian symbols of Birds, Urn, Flowers & Grapes

AGNUS DEI

Group C

Width - 122cm(48")
Pattern repeat – 38cm (15")
58% Viscose, 42% Silk

Colours Available



White/Gold.

White



The Lamb of God has always been a popular symbol in Northern Medieval art. In this depiction the Lamb wears a cruciform nimbus, symbol of the Resurrected Christ and holds a white banner of victory.

CHELMSFORD DAMASK

Group C

Width – 122 cm (48")

Pattern Repeat – 19cm (7½")

58% Viscose, 42% Silk.

COLOURS AVAILABLE



Ivory

Red

Green

Violet



A small turnover reversible design in the Geoffrey Webb style, introduced into our range in the 1920s

LUDLOW BROCATELLE

Group C

Width – 122cm (48")

Pattern Repeat – 45cm (18")

74% Cotton, 14% Viscose, 12% Metallic Yarn

COLOURS AVAILABLE FROM STOCK



Ivory/Gold

Red/Gold

COLOURS AVAILABLE TO ORDER ONLY

Green/Gold, Blue/Gold, Violet/Gold, Black/Gold



A Gothic design with Pineapple central motif surrounded by an Ogee. Designed by F.J. Flanagan.

ORLEANS

Group C

Width - 130cm (51")

Pattern repeat - 27cm (10¾")

32% Cotton, 28% Metallic Yarn, 17% Viscose, 17% Polyester, 5% Silk

COLOURS AVAILABLE

Gold / Red



A French design of the 16th Century evoking images of Henry VIII's meeting with Francis I of France at the field of the Cloth of Gold, the last great display of Medieval Chivalry. Also available as a Silk/Lurex Brocade (see Group B.)

PORTUGUESE TAPESTRY

Group C

Width – 122cm (48")
 Pattern Repeat – 64cm (25")
 61% Cotton, 39% Viscose

COLOURS AVAILABLE

Multi-colour on cream ground



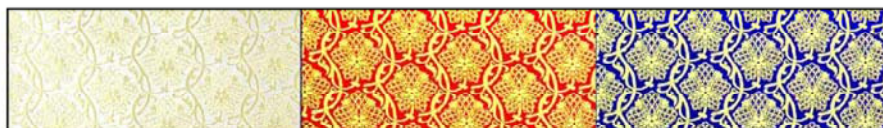
A Multi-coloured Indo-Portuguese design of the Eighteenth Century, its resilient shades will harmonise with most colour schemes.

ST. HUBERT BROCATELLE

Group C

Width – 127cm (50")
 Pattern Repeat – 8cm (3¼")
 45% Cotton, 15% Silk, 40% Metallic Yarn

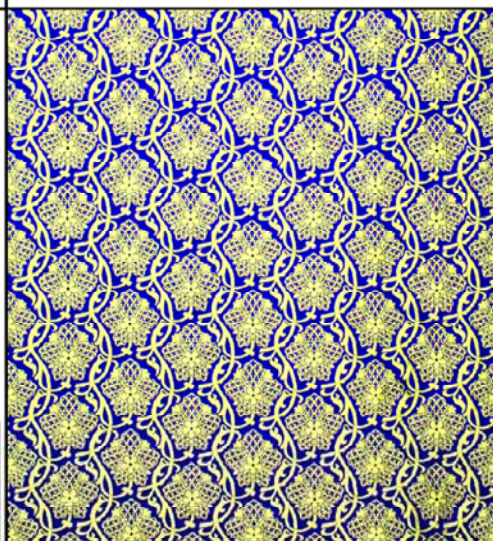
COLOURS AVAILABLE



White/Gold

Red/Gold

Blue/Gold



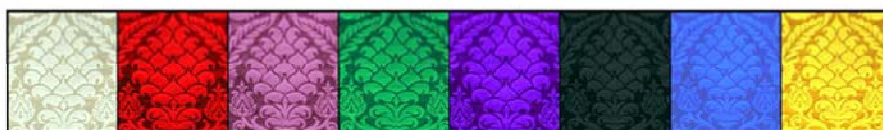
Recently re-introduced, this design by Sir J. Ninian Comper was first produced circa 1890. As with most of Comper's textiles, the design is of Netherlandish origin and comes from a 15th Century painting of the exhumation of St. Hubert

ST. NICOLAS DAMASK

Group C

Width – 122 cm (48")
 Pattern Repeat – 69cm (27")
 58% Viscose, 42% Silk.

COLOURS AVAILABLE



Ivory

Red

Rose

Green

Violet

Black

Blue

Gold



A unique combination of Ottoman and Gothic styles. Originally designed by William Randall Blacking for St. Nicolas Church, Guildford. Blacking drew his inspiration for the fan figure from a 16th Century Turkish design in the Kelekian Collection

TRURO DAMASK

Group C

Width – 122 cm (48")
Pattern Repeat – 35cm (14")
58% Cotton, 42% Silk.

COLOURS AVAILABLE



Ivory

Red

Green

Black

Dark Blue

Designed by F.J. Flanagan after the style of the Eighteenth Century French designs of the Marlborough and Blenheim period.

TUDOR ROSE DAMASK

Group C

Width – 122 cm (48")
Pattern Repeat – 25cm (10")
58% Viscose, 42% Silk.

COLOURS AVAILABLE



Ivory

Red

Green

An English design of the Sixteenth Century. After the conclusion of the Wars of the Roses the Rose became a very popular feature in both Ecclesiastical and Secular Architecture.

RAYON VERONA



VERONA TAPESTRY

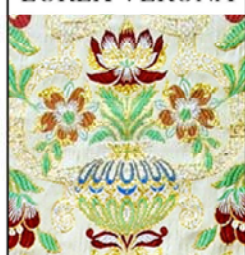
Width – 122cm (48") Pattern Repeat – 56cm (22")
61% Cotton, 39% Viscose

COLOURS AVAILABLE

Multi-colour on cream ground

Group C

LUREX VERONA



LUREX VERONA TAPESTRY

Width – 122cm (48") Pattern Repeat – 56cm (22")
61% Cotton, 31% Viscose, 8% Metallic Yarn

COLOURS AVAILABLE

Multi-colour on cream ground



A Multi-coloured Indo-Portuguese design of the Eighteenth Century, its resilient shades will harmonise with most colour schemes.

WAKEFIELD BROCATELLE

Width – 122 cm (48")

Pattern Repeat – 43cm (17")

42% Cotton, 31% Silk, 27% Metallic Yarn.

COLOURS AVAILABLE (with Gold Metallic)



White

Red

Green

Violet

Black

Blue

Gold



A classical Gothic design incorporating Pine Cone and Ogee figures woven with a gold metallic yarn and can be used on Face and Reverse sides. Adapted from an old Franco-German design in the late 1960s.

GROUP 'D' FABRICS

VENETIAN

Group D

Width 122cm (48")

Pattern repeat 45cm (18")

61% Cotton , 31% Viscose

COLOURS AVAILABLE

Multi Coloured



The linear layout of this design points to its Venetian origins. 15th Century artists of this region had a taste for reproducing patterns found in the architecture of ancient Rome

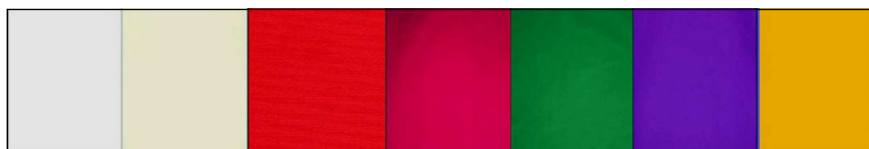
PLAINS, WEAVES, LININGS AND LINENS

ASHDOWN DUPION

Width – 120cm (47")

61% Cotton, 39% Viscose.

COLOURS AVAILABLE



Ivory

Dp.Cream

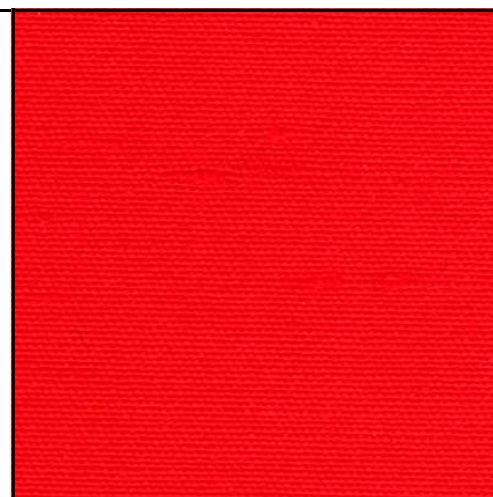
Red

Burgundy

Green

Violet

Gold



A weft faced dupion woven with a lightly slubbed yarn giving the look of a heavyweight plain silk. Satin backed.

CLOTH OF GOLD

Width – 122cm (48")
81% Cotton, 19% Metallic Yarn.

COLOURS AVAILABLE

Gold

A replica Cloth of Gold in the style of the heavy French Cloths of Gold of the late Nineteenth Century.

LUREX DIAPER

Width – 142cm (56")
61% Cotton, 39% Metallic Yarn.

COLOURS AVAILABLE

Gold

An artificial Cloth of Gold utilising a herringbone weave to facilitate the reflective qualities of the metallic yarn.

RAYON TAFFETA LINING

Width – 145cm (57")
100% Acetate.

COLOURS AVAILABLE



White

Red

Green

Violet

Old Gold.

A shiny ribbed poult Taffeta ideal for lining chasubles, copes, academic hoods etc.

LINENS

WIDTH

DESCRIPTION

PRE-SHRUNK DOWLAS

137cm (54")

A Linen/Cotton mixture used for interlining frontals, stoles etc.

WHITE FAIR LINEN

150cm (59")

A White 100% Linen used for altar cloths, purificators etc.

NARROW BRAIDS

GOLD CHAIN BRAID

Available in 1.25cm (½") only
Man Made Fibre/Metallic Yarn

COLOURS AVAILABLE

Gold Metallic



DICE BRAID

100% Man made Fibre
Available in 1.25cm (½") only

COLOURS AVAILABLE (with Gold Metallic)

White, Gold, Red, Green, Blue,
Violet, Black, Multi-colour.



ECCLESIA LUREX BRAID

100% Man Made Fibre
Available in 2.5cm and 1.25cm (1" & ½")

COLOURS AVAILABLE (with Gold Metallic)

Red, Green, Blue, Violet, Gold



GUILDFORD BRAID

100% Man Made Fibre
Available in 1.25cm (½") only

COLOURS AVAILABLE (with Gold Metallic)

White, Red, Green, Violet, Blue, Gold

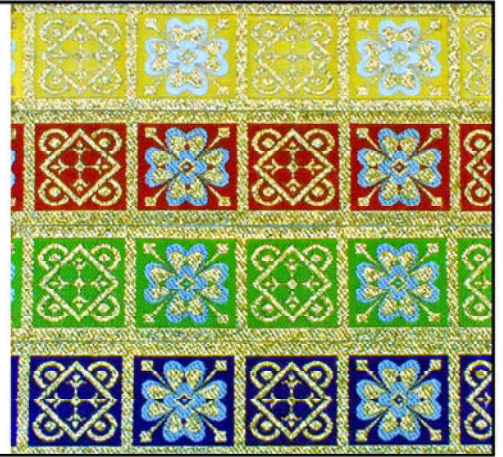


PUGIN BRAID

100% Man Made Fibre
Available in 1.25cm (½")

COLOURS AVAILABLE (with Gold Metallic)

Gold, Red, Green, Violet



QUATREFOIL BRAID

100% Man Made Fibre
Available in 1.9cm (¾")

COLOURS AVAILABLE (with Gold Rayon)

Gold, Red, Green, Blue, Violet, Roman Purple



ST. BENET BRAID

100% Man Made Fibre
Available in 1.9cm and 1.25cm (¾" & ½")

COLOURS AVAILABLE (with Gold Metallic)

Black, Red, Green, Blue, Violet/Gold, Violet/Silver,
Gold, Silver



TRAIL BRAID

100% Man made Fibre
Available in 1.25cm (½") only

COLOURS AVAILABLE (with Gold Metallic)

White, Red, Green, Blue, Violet, Black



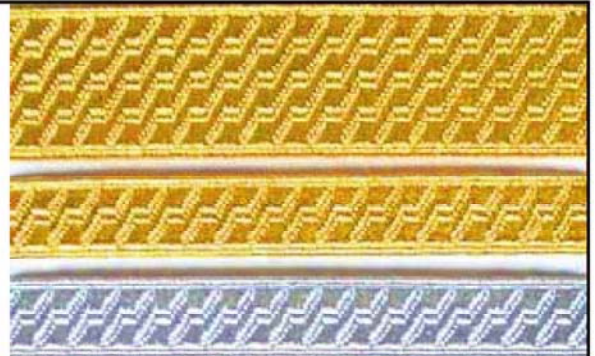
METALLIC BRAIDS

B&S BRAID

Man Made Fibre/Metallic Yarn
Available in 1.25cm and 2.5cm (½" & 1")

COLOURS AVAILABLE

Gold and Silver

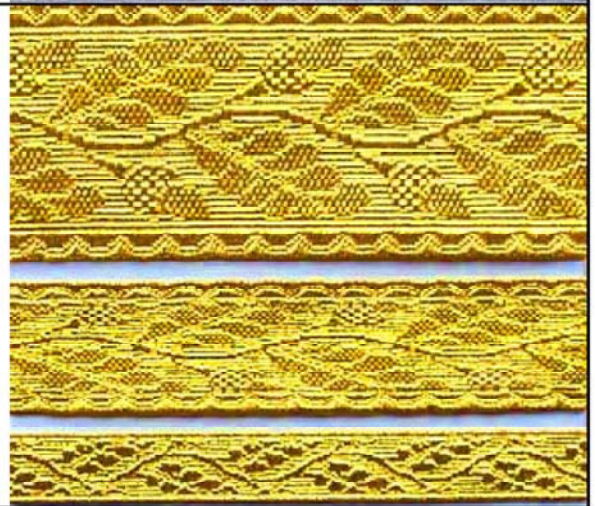


GOLD OAKLEAF BRAID

Man Made Fibre/Metallic Yarn
Available in 1.25cm, 2.5cm and 5cm (½", 1" & 2")

COLOURS AVAILABLE

Gold



3 inch wide ORPHREY BRAIDS

ECCLESIA LUREX

Width – 8cm (3")
100% Man Made Fibre

COLOURS AVAILABLE (with Gold Metallic)

Blue, Red, Violet, Green, Gold



PUGIN ORPHREY

Width – 8cm (3")
100% Man Made Fibre

COLOURS AVAILABLE (with Gold Metallic)

Violet, Roman Purple, Gold, Rose, Red, Green



ST. DOMINIC ORPHREY

Width – 8cm (3")
100% Man Made Fibre

COLOURS AVAILABLE (with Gold Metallic)

Black, Gold, Red, Green, Blue, Violet, Roman Purple



6 inch wide ORPHREY BRAIDS

ST. ANSELM ORPHREY

Width – 15.5cm (6")

100% Man Made Fibre

Pattern Repeat – 25.5cm (10")

COLOURS AVAILABLE (with Gold Metallic)

Red, Violet, Roman Purple, Green, White



ST. ANNE ORPHREY

Width - 15.5cm (6")

Pattern Repeat 36cm (14")

100% Man Made Fibre

COLOURS AVAILABLE (with Gold Metallic)

Violet, Red, Green, Blue, White



ST. MARTHA ORPHREY

Width - 15.5cm (6")

Pattern Repeat 27cm (10¾")

100% Man Made Fibre

COLOURS AVAILABLE (with Gold Metallic)

Red, Green, Ivory, Purple



ST. PHILIP ORPHREY

Width - 15.5cm (6")

Pattern Repeat 31cm (12¼")

100% Man Made Fibre

COLOURS AVAILABLE (with Gold Metallic)

Ivory, Red, Green, Violet



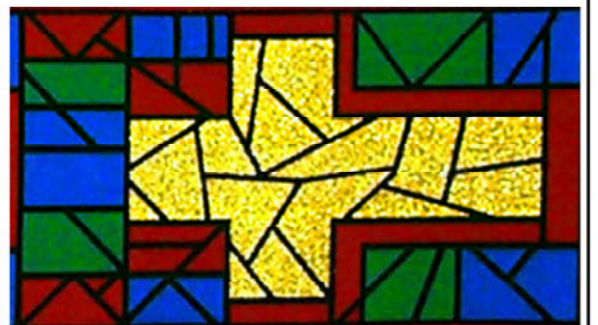
STAINED GLASS WINDOW ORPHREY

Width – 15.5cm (6")

100% Man Made Fibre

COLOURS AVAILABLE

Multi-coloured



FRINGES

PLAIN FRINGE

100% Man Made Fibre

COLOURS AVAILABLE

5.0cm (3") DEEP

Dark Gold (A), Bright Gold (BW), Cream,
Red, Blue, Green, Violet, Roman Purple

7.5cm (3") DEEP

Dark Gold (A), Bright Gold (BW)
Burgundy, Green, Ivory, Silver



TWO COLOUR FRINGE

Depth – 5cm (2")

100% Man Made Fibre

COLOURS AVAILABLE

Red/Gold, Blue/Gold, Green/Gold,
Violet/Gold, Roman Purple/Gold.



TAPESTRY FRINGE

Depth – 5cm (2")

100% Man Made Fibre

COLOURS AVAILABLE

Maroon/Cream/Green



METALLIC BULLION FRINGE

100% Man Made Fibre

Available in 5cm and 7.5cm (2"& 3")

COLOURS AVAILABLE

Gold



CORDS, TASSELS & EMBROIDERY

NOTECASE and CUSHION CORDS

COLOURS AVAILABLE

We stock shades to match all our fabrics both plain and with gold.



RAYON COPE TASSELS

Depth – 13cm (5")

All tassels are made by hand to match our fabrics and trimmings.



GOLD METALLIC TASSELS

Available in 10cm and 15cm (4" & 6") Depth



BANNER CORD & TASSEL SETS

COLOURS AVAILABLE

All tassels are made by hand to match our fabrics and trimmings.

OTHER SIZES AND STYLES OF TASSELS AVAILABLE TO ORDER



IMITATION JAP GOLD THREAD

Metalised Polyester containing Rayon

SIZES AVAILABLE

No.13 (K1) No.12 (K2)

No. 9 (K3) No. 8 (K4)

Approximately 30m of thread per reel.

