

J.WIPPELL & CO LTD

CLERICAL OUTFITTERS  
& CHURCH FURNISHINGS  
SINCE 1789

Head Office

P.O. Box 1, 88 Buller Road, Exeter,

EX4 1DQ, England

Tel: 01392 254234 Fax: 01392 250868

E-mail: info@wippell.com

USA Office

1 Mill Street (P.O. Box 468), Branchville,

New Jersey 07826

Tel: (1-877) 947-7355

Fax: (1-800) 525-3749

## FAIRFORD BROCADE

### Group B

Width – 145cm (57”), Pattern Repeat – 55cm (21½”), 60% Cotton, 40% Viscose



A Victorian Gothic design after the William Morris School with further inspiration drawn from a 15th century portrait of Richard 111



Bridal White



Ivory



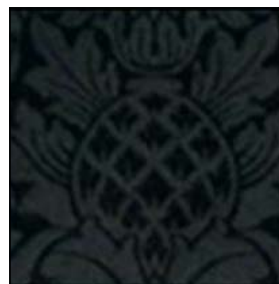
Red



Violet



Green



Black



Blue



Gold

J.WIPPELL & CO LTD

CLERICAL OUTFITTERS  
& CHURCH FURNISHINGS

SINCE 1789

Head Office

P.O. Box 1, 88 Buller Road, Exeter,

EX4 1DQ, England

Tel: 01392 254234 Fax: 01392 250868

E-mail: [info@wippell.com](mailto:info@wippell.com)

USA Office

1 Mill Street (P.O. Box 468), Branchville,

New Jersey 07826

Tel: (1-877) 947-7355

Fax: (1-800) 525-3749



Ivory/Gold



Red/Gold



Violet/Gold



Black/Gold



Black/Silver



Blue/Gold